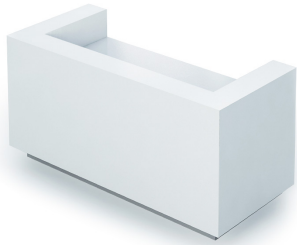


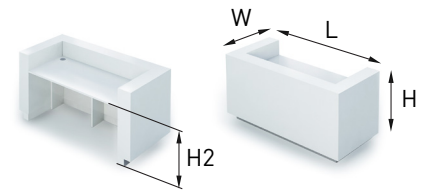
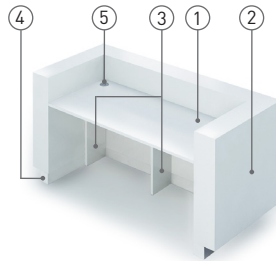
# ICE

## TECHNICAL INFORMATION

### Reception unit with fixed desk



L 78.75"  
W 35.5"  
H 39.5"  
H2 29"



#### Desktop (1)

- 25 mm MFC (melamine) with 2 mm ABS edges;
- Dimensions: 63"x27.5".

#### Modesty panel unit (2)

- MDF covered with enamel (based on polyurethane resins);
- Smooth mat silk surface (30% glossiness) or smooth high-gloss surface (100% glossiness);
- 45 degree panel connections with no edging.

#### Modesty panel and desktop supports (3)

- 1" MFC (melamine) with 2 mm ABS / thin edging.

#### Plinth base (4)

- Exterior part (front and side facades) pressed with polished aluminium colour HPL.

#### Grommets (5)

- Semi-transparent matte neutral colour plastic in grey outline;
- Ø 3.15".

## MATERIALS

Melamine / Enamel:



M1U13 M1U11

## FEATURES

- Mate silk touch or glossy enamel MDF covering
- Two grommets for wire management
- Easy assembling

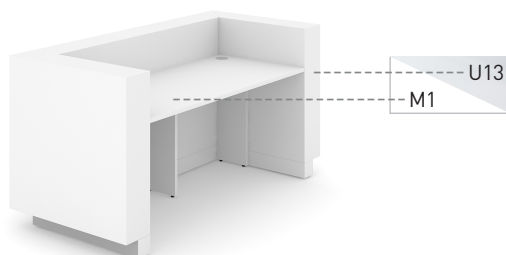
## GUARANTEE

- 5 years

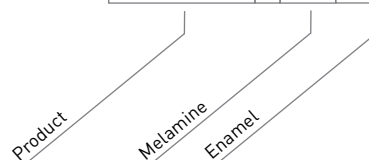
**! TRANSPORTATION.** Please note, that due to the delicate surface of enamel covered MDF, it is **OBLIGATORY TO USE PALLETS** for ICE furniture transportation. NARBUTAS company should not be held responsible for the damages due to the incorrect transportation method.

## ORDERING EXAMPLE

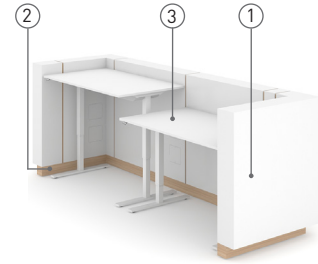
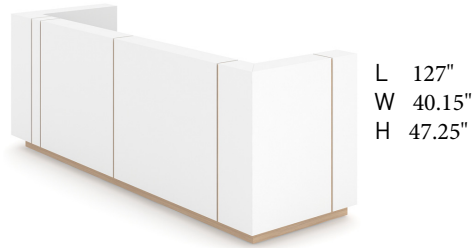
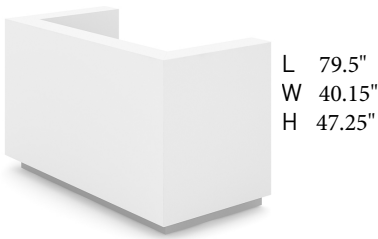
### Code structure



RNS207 - M1 U13



## Free-standing reception units for sit-stand or fixed height desks



### Modesty panel unit (1)

- MDF covered with enamel (based on polyurethane resins);
- Smooth mat silk surface (30% glossiness) or smooth high-gloss surface (100% glossiness);
- 45 degree panel connections with no edging;
- Décor strips – 3/4" wide, MFC (melamine), color matching the plinth base HPL.

### Desk space (3)

- RNS206 (for 1 desk) - suitable for all standard 63"x27.5"/31.5" sit-stand or fixed height desks;
- RNS320 (for 2 desks) - suitable for all standard 55"x27.5"/31.5" sit-stand or fixed height desks.

### Plinth base (2)

- RNS206 (for 1 desk) - exterior part (front and side facades) pressed with polished aluminium colour HPL;
- RNS320 (for 2 desks) - pressed with HPL, colour matching the modesty panel unit décor strips.

## MATERIALS

Enamel /  
Melamine  
and HPL:



\*Only for RNS206

## FEATURES

- Mate silk touch or glossy enamel MDF covering
- Free-standing reception unit for standard sit-stand or fixed height desks
- Easy assembling

## GUARANTEE

- 5 years

## ORDERING EXAMPLE

Code structure

